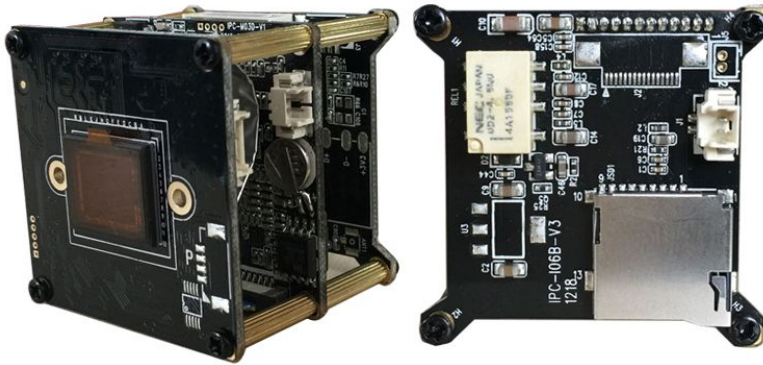


S185H16D-L26-BT3

2.0 megapixel Super low-light 3 Boards IP Camera Module, Hi3516A + SONY IMX185 CMOS

1/1.8" 2.0 Megapixels Progressive Scan Sony IMX185 CMOS, Hisilicon Hi3516D Chipset, the highest resolution of 1920*1080, 0.001 Lux@F1.2 (color); 38X38mm 3 boards; RS485, TF card slot, Optional Motorized lens, IR - CUT (day/night), adapt Bullet, Dome; H.264 or H.265 video coding, double stream, ONVIF 2.4, be compatible many NVR and platform management software.



Features

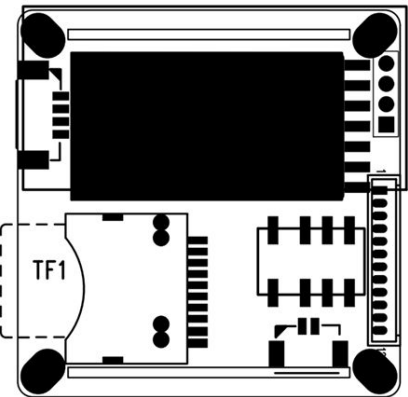
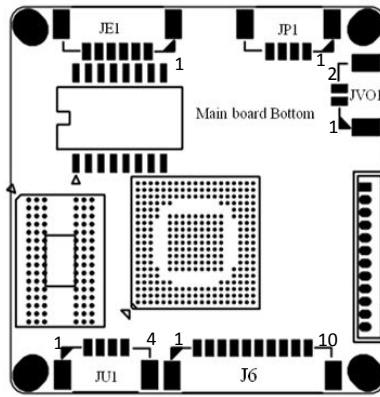
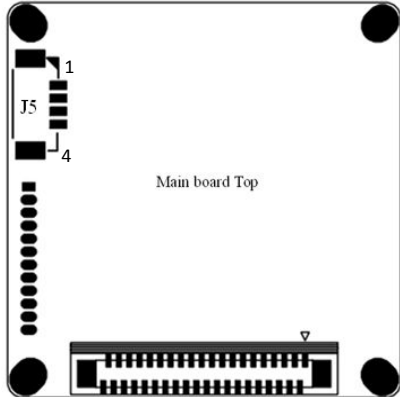
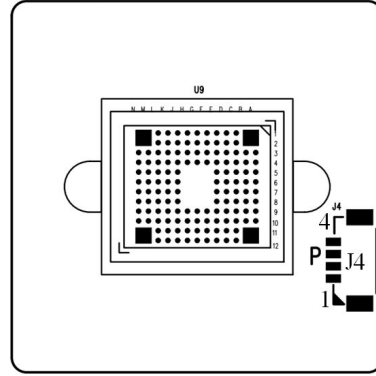
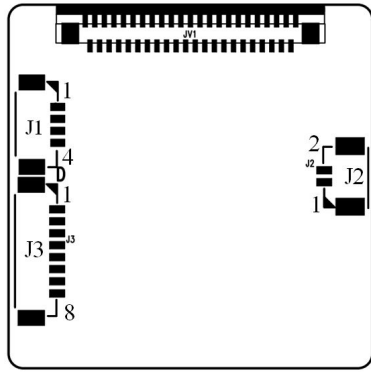
- > Hisilicon Hi3516D
- > 1/1.8" 2.0 Megapixels Progressive Scan Sony IMX185 CMOS
- > Max 25/30fps@2.0 Megapixels (1920x1080)
- > H.264/H.265 & MJPEG dual-stream encoding
- > Super low-light, 0.0001 Lux@F1.2 (color)
- > Privacy Mask, Motion Detection
- > Support Onvif 2.4 protocol
- > TF Card Slot
- > WDR > 80db

Specifications

Model	S185H16D-L26-BT3
Camera	
Image Sensor	1/1.8" 2.0 megapixels Progressive Sony IMX185 CMOS
CPU	Hisilicon 3516D
Effective Pixels	1920(H)x1080(V)
Scanning System	Progressive
Electronic Shutter Speed	Auto (1/25 ~ 1/10000s)
Min. Illumination	0.0001Lux/F1.2 (Color)
S/N Ratio	≥50db(AGC OFF)
Camera Features	
Day/Night	Auto(ICR)/Color/B/W
WDR	> 80db
White Balance	Auto

Gain Control	Auto	
Noise Reduction	3D	
Privacy Masking	Up to 4 areas	
Video		
Compression	H.264/MJPEG/H.265	
Resolution	1080P(1920×1080)/720P(1280×720)/D1(704×576)/VGA(640*480)/QVGA(320×240)	
Frame Rate	Main Stream	1920×1080(1 ~ 25/30fps)
	Sub Stream	D1/VGA/QVGA(1 ~ 25/30fps)
Bit Rate	32KB ~16Mbps, support VBR, CBR	
Text Overlay	Channel, Date & Time, Bit Rate	
Network		
Data Storage	Video record, Picture format	
Trigger	Manual, Automatic(motion detection, alarm, schedule, cycle)	
Alarm data transmission	FTP, E-mail, Browser, CMS	
Protocol	TCP/IP、UDP、RTP、RTSP、RTCP、HTTP、DNS、DDNS、DHCP、FTP、NTP、PPPOE、SMTP、UPNP	
ONVIF	ONVIF 2.4	
Max. User Access	8 users, IE, Google, Firefox	
Smart Phone	Windows Mobile, iPhone, iPad, Android	
Auxiliary Interface		
Audio in	Support	
Audio out	Support	
BNC Video out	Support	
RS422/RS485	Support	
USB	Support	
Alarm in	Support	
Alarm out	Support	
IO Interface	Reset	
Memory Card	Max 32G TF Card	
General		
Power Supply	DC12V / PoE (802.3af)	
Power Consumption	<3W	
Working Environment	-20°C~+55°C , Less than 90% RH	
Dimensions	38 x 38 x 35mm	
Weight	0.2kg	

Connector



JP1 Power Supply Connector

1	DC12V
2	CMT_R
3	CMT_T
4	GND

JE1 Network Connector

1	RJ45_1
2	RJ45_2
3	RJ45_3
4	RJ45_6
5	Network Connected Light (Green light)
6	Network Status Light (Yellow light)

J1 DC Auto-iris Connector (For AI Series)

1	Drive -
2	Damp-
3	Damp+
4	Drive +

J2 IR-cut Connector

1	IR-CUT Control Signal5V
2	IR-CUT Control Signal5V

J3 Motorized Lens Connector (For AZ Series and lens HV03610FB.ICR-MFZ(6MP))

1	Focus A-
2	Focus A+
3	Zoom A-
4	Zoom A+

5	Zoom B+
6	Zoom B-
7	Focus B-
8	Focus B+
J4 P-Iris Connector	
1	IRIS A-
2	IRIS B+
3	IRIS A+
4	IRIS B-
J5 IR Light Board Connector	
1	IR Light Board Power Supply (12V)
2	GND
3	IR Feedback Signal Input (0.8V-12V)
4	IC PWM Control
JVO1 BNC Video out	
1	BNC Video out
2	GND
J6 Functions Connector	
1	Audio In (MIC/ Line)
2	GND (Audio)
3	Audio Out
4	GND
5	Reset
6	Alarm In
7	Alarm Out -
8	Alarm Out +
9	RS_485+
10	RS_485-
JU1	
1	GND
2	USB_D-
3	USB_D+
4	5V Power Supply